



CENTRAL PLAINS DRESSAGE

Central Plains Dressage Society is a USDF Group Member Organization in Oklahoma. We offer dressage enthusiasts a place to learn about the sport, socialize with other dressage riders, participate in shows and clinics, and more.

Central Plains Dressage News

Volume 2
Number 6
June 2018

President's Report: Our Progress is Amazing! 135 Members and We're Still Growing.

By Chris Cashel



Chris and her horse Keo, who helped her earn her silver medal.

Central Plains just passed the half-way mark in our first year! It is a good time to review what has been happening and where we are going.

First, our progress is amazing! We have topped 135 members and continue to attract new people. With a busy Board and group of volunteers we are running a large number of events. So far, we have hosted two 2-day recognized shows, one lite recognized western dressage show, an Arab sport horse show, five schooling shows at Valley View and four schooling shows in the east region. Still to come are three more recognized shows, three more lite recognized western shows, two-B rated working equitation shows, three more schooling shows in the west and two more in the east. Schooling shows will be capped off with a championship show, as will the recognized shows.

A comprehensive wellness day was well-supported, and others are being planned. These wellness days give our members an opportunity to learn about new therapeutic techniques, check saddle fitting, learn about nutrition and catch up on routine vet needs. Our live-streaming of shows is gaining in popularity, and, as one who has used this option, it is a wonderful opportunity to watch and support our competitive riders. On top of all that, we are preparing for the Junior Camp, and in August, the Adult Camp. There is also a new test seminar in the fall with Janet Foy.

We have tried to be responsive to the needs of members and recently adjusted the year-end award structure. We are focused on goals and moving from one to another with enthusiasm!

President's Report, continued on p. 3

News in Brief

Awards Program Changes

The Central Plains Dressage Society year-end awards program has been radically expanded because of strong participation. The Board of Directors voted to include four categories of awards:

- All shows
- Recognized shows only
- East schooling shows only
- West schooling shows only

You may view the updated points totals by clicking on the "CPDS Year End Awards" page under the Central Plains tab on horseshowconsulting.com. On that link you will find the four point

totals and a listing of current Central Plains Dressage members. Remember that you must be a Central Plains member by July 1 in order for your Spring/Summer results to count. Breed high point awards are also being considered for addition.

JUNE 23-24 UPDATE

The June 23-24 show with Paula Lacy "S" judging is full with a waitlist formed. The clinic has a few slots available. For information regarding the clinic and show, please visit www.horseshowconsulting.com.

Junior Riders Camp

Central Plains Dressage is offering a camp for junior riders, June 15-17 at Valley View Equestrian Center in Stillwater, Oklahoma. The cost of the camp is only \$150 and includes meals, a t-shirt and lodging.

The agenda and application are on our [website](#).



Welcome



Spring

We have fly masks for all our horses. They are pretty standard stuff, gray or brown, or maybe in an over-the-top moment, tiger-striped. But then we found this wonderful purple contraption for Lily, who always tears her fly masks off, in hopes that she would keep it on.

Who dreamt this thing up? It looks like it's made of black lace and nylon. When we took it out of the box we made a couple of off-color jokes (you can imagine) and marveled at how exotic it looked compared to the others. Then we put it on her and it stayed on all day.

Only \$10, but so wild and crazy! Keeps flies out of eyes and ears, and gives us all a good laugh when we see her out in the field oblivious to how cool she looks.

Dressage is not bling-y. Dressage is all about the horse, and anything that detracts from attention to the horse, like wearing colorful outfits or tacking up with diamond-studded bridles, is not in the spirit of this tradition.

This enhances the history of our sport, and indeed, dressage riders think very carefully about how to harmonize with their horses in movement and in attire. I think that is wonderful. But in your off moments, I say go a little off the deep end. Be colorful. Indulge your silly side. Let your horse wear purple and lace.

Best regards,
Nancy Spring

Ask the Show Secretary

By Stacia Wert-Gray

Q What is the difference between the “trainer” and “coach” lines on my recognized show entry blanks?

A For purposes of USEF rules, a coach is defined as any adult who receives remuneration for having or sharing the responsibility for instructing, teaching, schooling, or advising a rider, driver, handler or vaulter in equestrian competitions. Coaches must sign the entry blanks and provide proof of USEF membership.

A trainer is defined as any adult who has the responsibility for the care, training, custody or performance of a horse. Said person must sign the entry blank of any Licensed Competition whether said person be an owner, rider, agent and/or coach as well as trainer. The trainer is responsible for the care of the horse during the competition and must be on the grounds during the show.

Calendar

JUNE

- 9 Working Equitation Recognized "B" Level Show and Schooling Show
Sheridan Stables
- 15 - 17 Junior Riders Camp
Valley View
- 23-24 USEF/USDF Recognized Show
Valley View
- 25 Clinic
Valley View
- 30 USEF Western Dressage
Schooling Show
Valley View

JULY

- 14 Schooling Show
Valley View
- 15-16 Clinic
Valley View

Entry information for all CPDS shows is available at www.horseshowconsulting.com.

CENTRAL PLAINS DRESSAGE

[Central Plains DressageNews](#)

The newsletter of the
Central Plains Dressage Society

www.centralplainsdressage.org

Editor Nancy Spring

Design Nancy Spring

Contributors All our members

Contact Nancy Spring at
nspring@springpages.net

President's Report, *cont. from p. 1*

What this means to you as a member is that there is a lot of work and the more people involved, the easier the load. For example, with the change in award structure we will now need to fund-raise and/or acquire many more prizes. Please offer to assist in this area. We are always in need of show volunteers! While there is a strong core on both sides of the state, new blood is needed. Set up, show-day duties and clean-up are opportunities to serve the organization, get to know other members and generally feel good. No experience is necessary, just a willingness to help!

We believe in supporting interests and people as they pursue their own goals. We try to do this in a friendly and forward-looking way. I have been very happy that there are pop-up groups getting together to practice quadrilles, freestyles, etc. Members are having enough show opportunities to earn medals. So far, we have one gold, and 2 silver medalists this season.

I am so proud of where we are and where we are going. We really believe that offering opportunities for people to enjoy time with their horse is key.

May Show Reports

By Stacia Wert-Gray

USEF/USDF Recognized Show Report

The May 19-20 weekend saw 50 horse/rider combinations at Valley View Equestrian Center for our second USEF/USDF recognized show. The weather was great on Sunday after a hot Saturday start. Our judge was Debbie Riehl Rodriguez and the TD was Bob Cooper.

Three Central Plains members earned USDF medals during the weekend. Congratulations to silver medalists Kari Nichols and Nancy Burba. Olivia Brackin earned her bronze medal. Sunday lunch celebrated those accomplishments along with a few birthdays.

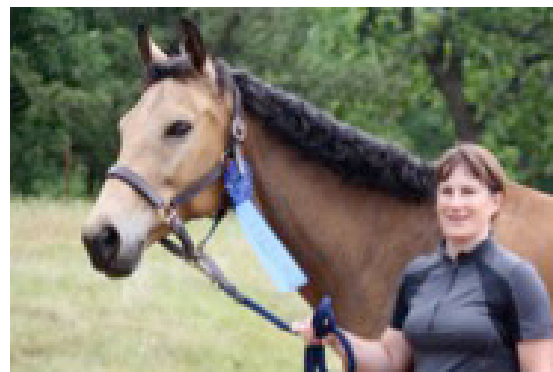
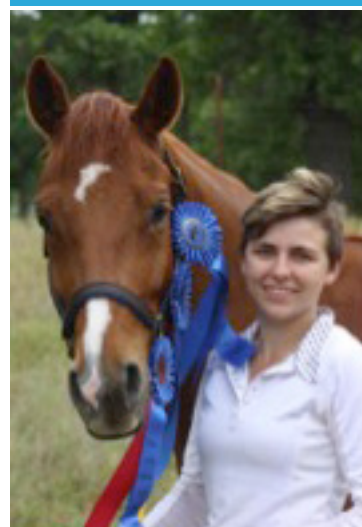
The live stream was a rousing success with 450+ people tuned-in to watch over the two days! Most of the viewers were located in Oklahoma and Kansas, but a few were in the Pacific Northwest! Show management received many comments about how much friends and family enjoyed watching the show from all across the country. For complete class results, please visit www.horseshowconsulting.com. The following is a list of the show high points.

MAY 19-20 USEF/USDF RECOGNIZED SHOW HIGH POINTS

Introductory Level			
Open	Pfrankincense HP	Kristin Knutson	73.250
Amateur	None		
Junior	Faloria GCH	Evyn Duncan	70.938
Training Level			
Amateur	Maxed Out	Amanda Swain	63.846
Junior/YR	Wie Gehtz	Kari Nichols	71.591
Open	Pfrankincense HP	Kristin Knutson	73.261
First Level			
Amateur	Happy Go Lucky	Holly Fisher	65.588
Junior/YR	Wie Gehtz	Kari Nichols	73.382
Open	Sahara de Hus	Vincenet Flores	70.588
Second Level			
Amateur	Beyond's Flashy Jet	Jessica Harrison	66.585
Junior/YR	Bravo	Kendra McDermott	66.667
Open	None		
Third Level			
Open	Lust in the Wind	Holly Luke	68.462
Amateur	None		
Junior	Cobridge El Dorado	Olivia Brackin	60.128
Fourth Level			
Open	None		
Amateur	Lust in the Wind	Holly Luke	64.189
Junior/YR	Lupo	Kari Nichols	59.189
FEI Level			
Open	Vashti	Kristin Knutson	67.941
Amateur	Sunset Blvd	Stacy Gerling	62.353
Junior/YR	Ambition 7	Kari Nichols	66.765

MEDAL WINNERS

Three Central Plains members earned USDF medals during the weekend. Congratulations to silver medalists Kari Nichols and Nancy Burba. Olivia Brackin earned her bronze medal.



Photos, Stacia Wert-Gray

May Show Reports continued on p. 4

May Show Reports continued from p. 3

Mothers Day the Central Plains Way

Sunday, May 13, gave our friends riding Arabian horses an opportunity to qualify for the Arabian Regional Championships this summer. Central Plains offered an AHA "Value" show in the morning and a schooling show open to all breeds in the afternoon. It turned out to be a long day, as both shows were well supported. Our judge was Ann Genovese "r" from Atlanta, Georgia.

May 13 EAST SCHOOLING SHOW HIGH POINTS

AHA Value Show

Introductory Level	Kathleen Cannon Pittman	EF Monogram	64.000
Training Level	Sarah Pryor	I'ma Prairie Rose	74.564
First Level	Rebecca Moore	Victory DDA	68.886
Second Level and above	none		
WD Introductory	Rebecca Wallisch Pratt	Cadillac Jack CA	66.429
WD Basic	Sarah Pryor	Al-Marah Lead Telal	65.200
WD Level 1 and above	Carole Purdy	Confettis Richochet	71.852
Sport Horse In Hand (tie)	Sarah Pryor	I'ma Prairie Rose	75.000
	Rebecca Wallisch Pratt	Cadillac Jack CA	75.000

Schooling Show

Introductory Level	Bellatrix	Amy Mullin	70.938
Training Level	Wei Ghets	Kari Nichols	73.636
First Level	Wei Ghets	Kari Nichols	65.9263
Second Level and above	Constatijn	Katie Edsall	60.000
WD Introductory	LA Peppermint Patty	Nancy Burba	70.000
WD Basic	Kit and Caboodle	Janet Cagle	71.400
WD Level 1 and above	Valley Boy	Kendra McDermott	65.385

Central Plains East Schooling Show Results

The May 26 schooling show at Sheridan Stables was well-attended. Our judge was Aaron Wilson "L" who stayed for a clinic on the 27th at the Rocking C in Inola. The following is a list of show high points. Complete class results are available at www.horseshowconsulting.com.

May 26 EAST SCHOOLING SHOW HIGH POINTS

Introductory Level	Red	Patty Couch	73.125
Training Level	OM El Pashahn	Richal Flannery	71.346
First Level	Happy Go Lucky	Holly Fisher	66.176
Second Level and Above	None		
WD Introductory	Remington	Patty Couch	71.5
WD Basic	Cowboy	Diane Allred	71.458
WD Level 1 and Above	Valley Boy	Kendra McDermott	71.346

